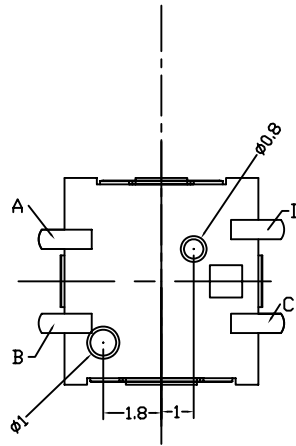
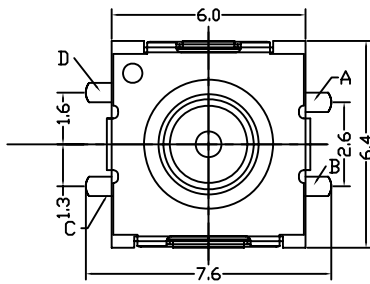


# DOUBLE ACTION SWITCH

## Specification

1. Rating: 12 VDC 50 mA
2. Operating temperature: -20°C +70°C
3. Contact resistance: 100m  $\Omega$  (Initial)
4. Insulation resistance: 100 M  $\Omega$  (MIN)
5. Withstanding voltage: To be normal for 1 minute at 250 VDC.
6. Bounce: 5 ms MAX.
7. Electrical life: 300,000 times (Min.)
8. Operating force: 1st=100 $\pm$ 50gf 2 nd= 260 $\pm$ 80gf
9. Resistance to soldering heat:  
Manual soldering 300° C 3 sec  
Reflow soldering 260°C 5 sec MAX
10. Quantity: 1100 pcs/per reel.

ORDER NUMBER: DAS-06-P



PCB mounting hole and land dimensions.(TOLERANCE  $\pm$ 0.1)

